



WALLACE CENTERS OF IOWA

THE WALLACE FARM
2773 290th Street, Orient, IA 50858
641-337-5019 • amyzellweger@wallace.org

make the WALLACE FARM part of your package

The **WALLACE FARM** can be a destination of its own and is also conveniently located to other communities and attractions such as these:

ADAIR COUNTY/GREENFIELD

Iowa Aviation Museum & Pilot's Hall of Fame
Foster's Car Collection
Schildberg's Car Collection
Warren Cultural Center
Greenfield Historic Distric/Public Square
Harold's Hitching Post
Adair County Heritage Museum Complex

MADISON COUNTY/WINTERSET

John Wayne Birthplace & Museum
Iowa Quilt Museum
Clark Tower
Imes Covered Bridge
Hollwell Covered Bridge
Cutler-Donahoe Covered Bridge
Roseman Covered Bridge
Pammel Park

UNION COUNTY/CRESTON

Creston Public Art Murals
Historic Railroad Depot
1931 Renovated Phillips Gas Station
Talmage Hill Wildlife Area
Mount Pisgah National Monument
Union County Historical Village



SELECTED RESOURCES:

Adair County Tourism
www.visitadaircounty.org

Greenfield Chamber/Main Street:
www.greenfieldiowa.com

Iowa Aviation Museum:
www.flyingmuseum.com

Warren Cultural Center:
www.warrenculturalcenter.com

Madison County Chamber of Commerce:
www.madisoncounty.com

The John Wayne Birthplace Museum:
www.johnwaynebirthplace.museum

Iowa Quilt Museum:
www.iowaquiltmuseum.org

Union County Tourism:
www.unioncountyiowatourism.com

Creston Public Art Murals:
www.crestonarts.com



updated May 2024



WALLACE CENTERS OF IOWA

THE WALLACE FARM
2773 290th Street, Orient, IA 50858
641-337-5019 • amyzellweger@wallace.org

SAMPLE ITINERARY: one day in Madison County

Start your day at the **ST. CHARLES WELCOME CENTER**, operated by the Madison County Chamber of Commerce. There you can pick up maps and directions to the covered bridges, find public restrooms, souvenirs, and locally-made products.

Stop at the **IMES COVERED BRIDGE**, the oldest remaining of Madison County's covered bridges. Then head west on St. Charles Road/G50 to Holliwell Bridge Road. **HOLLIWELL COVERED BRIDGE** was one of two bridges used in the 1995 movie, *The Bridges of Madison County*. Just a few miles from Holliwell is **CITY PARK** in Winterset. Discover gems such as **CUTLER-DONAHOE COVERED BRIDGE**, an English hedge maze, whimsical wooden sculptures, and **CLARK TOWER**, to name a few.

Tour the only museum in the world dedicated to Hollywood legend John Wayne. The **JOHN WAYNE BIRTHPLACE & MUSEUM** honors Winterset's own in grand style and features the largest private collection of John Wayne memorabilia in existence. Be sure to pose with the full-size bronze statue out front.

If arts and crafts are more your thing, a visit to the **IOWA QUILT MUSEUM** is a must! The museum brings in new, curated exhibits every few months, so there's always something new to see.

Head west on IA-92, stopping at **ROSEMAN COVERED BRIDGE** or **PAMMEL PARK** on the way, before heading north on P57 to Earlham. **BEANS AND BEIGNETS** in Earlham is a relaxed cafe that offers great coffee and food.

Self-guided tours of the birthplace farm of Henry A. Wallace in nearby Orient are available any time. Take the sculpture walking path through the restored prairie and shop for items from local artisans in the gift shop. On Fridays from June to September, the **WALLACE FARM** offers their award-winning Pizza on the Prairie nights (reservations required).



RESOURCES:

Madison County Chamber of Commerce:
www.madisoncounty.com

The John Wayne Birthplace Museum:
www.johnwaynebirthplace.museum

Iowa Quilt Museum:
www.iowaquiltmuseum.org

Beans and Beignets:
www.madisoncounty.com

Wallace Farm:
www.wallace.org

*itinerary & photos courtesy of
Madison County Chamber of Commerce*





WALLACE CENTERS OF IOWA

THE WALLACE FARM
2773 290th Street, Orient, IA 50858
641-337-5019 • amyzellweger@wallace.org

SAMPLE ITINERARY: one day in Greenfield, IA

Start the day at the **IOWA AVIATION MUSEUM & PILOTS HALL OF FAME**. This tribute to Iowa's fascinating aviation heritage is like 3 museums in one with more than a dozen antique aircraft, model displays, and military memorabilia.

With 2 outstanding car collections in town, car buffs will be overcome with delight. **FOSTER'S CAR COLLECTION** and **SCHILDBERG'S CAR COLLECTION** are both chock-full of antique and classic cars and the stories that go with them.

Close by is the **WARREN CULTURAL CENTER**. The tour of this 1896 opera house includes stories from the restoration project, living quarters of the original owners, a monthly art exhibit and shopping at **ED & EVA'S**, where all items are made in Iowa.

A guided tour around Greenfield's **HISTORIC DISTRICT** is sure to note its unusual **PUBLIC SQUARE** design, known as a Lancaster Square. Don't miss your chance to do some shopping!

HAROLD'S HITCHING POST is not to be missed! This display of custom horse hitches and wagons are sure to bring back memories of traveling under true horsepower.

Film fans won't want to miss the collection from the movie Cold Turkey at the **ADAIR COUNTY HERITAGE MUSEUM COMPLEX** and the outdoor displays of the Old Depot, Church and Schoolhouse.

At the nearby **WALLACE FARM**, self-guided tours of the birthplace farm of Henry A. Wallace are available any time. Take the sculpture walking path through the restored prairie and seasonal prairie art exhibit (June-early October), then shop for items from local artisans in the gift shop. On Fridays from June to September, the **WALLACE FARM** offers their award-winning Pizza on the Prairie nights (reservations required).



RESOURCES:

Greenfield Chamber/Main Street:
www.greenfieldiowa.com

Iowa Aviation Museum:
www.flyingmuseum.com

Foster's Car Collection:
www.greenfieldiowa.com

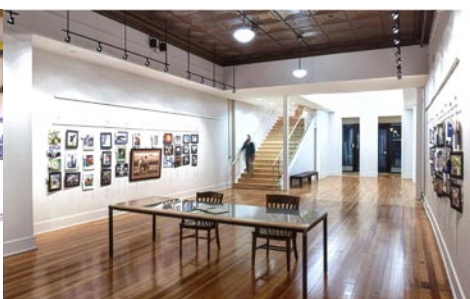
Schildberg's Car Collection:
www.greenfieldiowa.com

Warren Cultural Center:
www.warrenculturalcenter.com

Harold's Hitching Post:
www.greenfieldiowa.com

Adair County Heritage Museum:
www.visitadaircounty.org

Wallace Farm:
www.wallace.org



updated May 2024