



# WALLACE CENTERS OF IOWA

THE WALLACE FARM  
2773 290th Street, Orient, IA 50858  
641-337-5019 • amyzellweger@wallace.org

## THE WALLACE FARM | ORIENT

*Birthplace of Henry A. Wallace: "The Most Influential Iowan of the 20th Century"*

Henry A. Wallace was elected US Vice President, yet his place in "America's first family of agriculture" was by virtue of his birth. Early in his career, he founded a world-renowned seed corn company and was an editor of Wallaces' Farmer magazine. He served as Vice President during WWII in addition to holding cabinet positions before and after the war. Learn more about the Wallace family's legacy as you tour this historic site.

### THE BIRTHPLACE FARM

Open year-round, the Wallace Farm, now on the National Register of Historic Places, is a 40-acre parcel of the family's original 160-acre farm.

### Historic Site

The farm was owned by "Uncle Henry" Wallace, later the first editor of Wallaces' Farmer. His son, Henry C. (Harry) Wallace moved here in 1886 to raise purebred Shorthorn cattle, Percheron horses, Poland China hogs, and feeder cattle. Henry A. was born on the farm in 1888.

### Restored Farmhouse

The Farmhouse is a common example of rural homes throughout Iowa from the late 1800s and early 1900s. It now houses our Gift Shop.

### Gathering Barn

Built in 2003, the Gathering Barn replicates the original barn that stood west of the house in the early days of the farm.

### Restored Iowa Prairie & Sculpture Walking Path

The 9-acre prairie provides an ever-changing landscape of grasses and forbes surrounding 5 outdoor art sculptures.

### Orchard & Produce Garden/Garden for Good

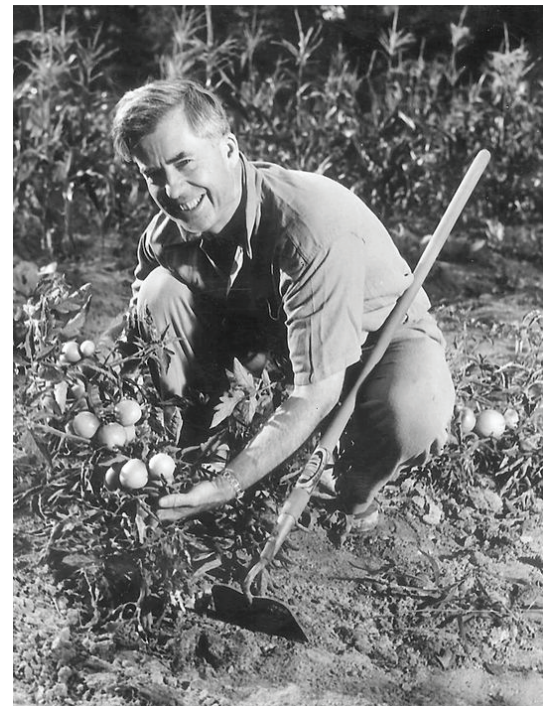
About 8 acres in size, the Orchard and Produce Garden yields 40+ varieties and includes one acre of sweet potatoes set aside for food-assistance programs.

### Geothermal Greenhouse - NEW!

Drawing from the earth and sun for heating and cooling, the geothermal greenhouse provides fresh produce year-round.

### Historic Demonstration Corn Plot

Select varieties show the evolution of corn and Henry A. Wallace's role in hybridization. Wallace founded the Hi-Bred Corn Company in 1926, better known as Pioneer Hi-Bred.



*"If I were to draw conclusion from my life so far I would say the purpose of existence here on earth is to improve the quality and abundance of joyous living."*

*Henry A. Wallace*



updated October 2023



# WALLACE CENTERS OF IOWA

THE WALLACE FARM  
2773 290th Street, Orient, IA 50858  
641-337-5019 • amyzellweger@wallace.org

## GROUP DINING, PROGRAM & TOUR OPTIONS

### DINING:

**What sets our meals apart?** Whenever possible, ingredients include the **organically-grown fruits, vegetables and herbs harvested** just steps away from the kitchen. Other Iowa farmers provide additional locally-sourced ingredients such as meat, eggs, grains and cheese.

### MENU OPTIONS – served anytime

- **CHUNKY CHICKEN SALAD** on Artisan Bread, served with Garden Salad \$17
- **QUICHE** – Seasonal Veggies, Swiss Cheese & Eggs with Garden Salad. \$16; add Ham or Bacon \$17
- **PENNE PASTA** – Seasonal Veggies and a Seasonal Sauce with Garden Salad. \$16; add Chicken \$17
- **IOWA HAM BALLS** – A local favorite! Seasoned Ham Balls with Seasonal Veggies and Garlic Smashed Potatoes. \$19
- **PORK LOIN** with our own Apple Butter Glaze, Roasted Potatoes and Seasonal Vegetables. \$20
- **HOUSEMADE MEATLOAF** – All-Beef Meatloaf with our own Tomato Compote, Garlic Smashed Potatoes and Pan Gravy, served with Garden Salad. \$20

*All meals include a From-Scratch Seasonal Dessert of our choice, Water, Ice Tea and Coffee.*

### OTHER DETAILS:

- **Select one menu choice for all, except for those with dietary needs.**
- Minimum of 20 and maximum of 65 diners.
- Meals are priced per person, all-inclusive.
- Beer and Wine are available for purchase.
- **The menu option and confirmed number are required at least 7 days prior to the event. You will be charged for the confirmed number.**
- All prices and options listed are valid if booked before **June 30, 2024.**

### GROUP PROGRAMS/TOURS:

#### *Open year-round*

With options for a self-guided tour or an educational program (or both), your group will be talking about their visit to the Wallace Farm long afterward.

**SELF-GUIDED TOUR:** After staff explain the farm's points of interest, guests have time to explore the production garden, prairie, outdoor artwork, orchard, historic corn plot, etc. Tours can take place before or after meals.

**EDUCATIONAL PROGRAMS:** Programs can occur as visitors are eating dessert or afterwards. Our standard program:

#### • **THE WALLACE LEGACY**

Learn about the amazing accomplishments of 3 generations of Henry Wallaces in agriculture, journalism and public service and how the Wallace Centers of Iowa continues their legacy.

Other options:

#### • **HISTORY LESSON**

A program of agricultural stories excerpted from issues of Wallaces' Farmer published when the Wallace family were editors. Flexible length and can be included during a full meal.

#### • **CUSTOM PROGRAMS**

With advanced notice, custom programs can fit your schedule and group interests such as:

- Conservation
- Prairie Restoration
- Geothermal Greenhouse

### RATES

**Lunch or Dinner + Program/Tour:**  
add \$3.00/person to meal price.  
Total time: 2 hours

**Arriving outside Meal Time?**  
**Dessert Only + Program/Tour:**  
\$9.00/person.  
Total time: 1 to 1.5 hours



updated October 2023





# WALLACE CENTERS OF IOWA

THE WALLACE FARM  
2773 290th Street, Orient, IA 50858  
641-337-5019 • amyzellweger@wallace.org

## make the WALLACE FARM part of your package

The **WALLACE FARM** can be a destination of its own and is also conveniently located to other communities and attractions such as these:

### ADAIR COUNTY/GREENFIELD

Iowa Aviation Museum & Pilot's Hall of Fame  
Foster's Car Collection  
Schildberg's Car Collection  
Warren Cultural Center  
Greenfield Historic District/Public Square  
Harold's Hitching Post  
Adair County Heritage Museum Complex

### MADISON COUNTY/WINTERSET

John Wayne Birthplace & Museum  
Iowa Quilt Museum  
Clark Tower  
Imes Covered Bridge  
Holliswell Covered Bridge  
Cutler-Donahoe Covered Bridge  
Roseman Covered Bridge  
Pammel Park

### UNION COUNTY/CRESTON

Creston Public Art Murals  
Historic Railroad Depot  
1931 Renovated Phillips Gas Station  
Talmage Hill Wildlife Area  
Mount Pisgah National Monument  
Union County Historical Village



### SELECTED RESOURCES:

Adair County Tourism  
[www.visitadaircounty.org](http://www.visitadaircounty.org)

Greenfield Chamber/Main Street:  
[www.greenfieldiowa.com](http://www.greenfieldiowa.com)

Iowa Aviation Museum:  
[www.flyingmuseum.com](http://www.flyingmuseum.com)

Warren Cultural Center:  
[www.warrenculturalcenter.com](http://www.warrenculturalcenter.com)

Madison County Chamber of Commerce:  
[www.madisoncounty.com](http://www.madisoncounty.com)

The John Wayne Birthplace Museum:  
[www.johnwaynebirthplace.museum](http://www.johnwaynebirthplace.museum)

Iowa Quilt Museum:  
[www.iowaquiltmuseum.org](http://www.iowaquiltmuseum.org)

Union County Tourism:  
[www.unioncountyiowatourism.com](http://www.unioncountyiowatourism.com)

Creston Public Art Murals:  
[www.crestonarts.com](http://www.crestonarts.com)



updated October 2023



# WALLACE CENTERS OF IOWA

THE WALLACE FARM  
2773 290th Street, Orient, IA 50858  
641-337-5019 • amyzellweger@wallace.org

## SAMPLE ITINERARY: one day in Madison County

Start your day at the **ST. CHARLES WELCOME CENTER**, operated by the Madison County Chamber of Commerce. There you can pick up maps and directions to the covered bridges, find public restrooms, souvenirs, and locally-made products.

Stop at the **IMES COVERED BRIDGE**, the oldest remaining of Madison County's covered bridges. Then head west on St. Charles Road/G50 to Holliwell Bridge Road. **HOLLIWELL COVERED BRIDGE** was one of two bridges used in the 1995 movie, *The Bridges of Madison County*. Just a few miles from Holliwell is **CITY PARK** in Winterset. Discover gems such as **CUTLER-DONAHOE COVERED BRIDGE**, an English hedge maze, whimsical wooden sculptures, and **CLARK TOWER**, to name a few.

Tour the only museum in the world dedicated to Hollywood legend John Wayne. The **JOHN WAYNE BIRTHPLACE & MUSEUM** honors Winterset's own in grand style and features the largest private collection of John Wayne memorabilia in existence. Be sure to pose with the full-size bronze statue out front.

If arts and crafts are more your thing, a visit to the **IOWA QUILT MUSEUM** is a must! The museum brings in new, curated exhibits every few months, so there's always something new to see.

Head west on IA-92, stopping at **ROSEMAN COVERED BRIDGE** or **PAMMEL PARK** on the way, before heading north on P57 to Earlham. **BEANS AND BEIGNETS** in Earlham is a relaxed cafe that offers great coffee and food.

Self-guided tours of the birthplace farm of Henry A. Wallace in nearby Orient are available any time. Take the sculpture walking path through the restored prairie and shop for items from local artisans in the gift shop. On Fridays from June to September, the **WALLACE FARM** offers their award-winning Pizza on the Prairie nights (reservations required).



### RESOURCES:

Madison County Chamber of Commerce:  
[www.madisoncounty.com](http://www.madisoncounty.com)

The John Wayne Birthplace Museum:  
[www.johnwaynebirthplace.museum](http://www.johnwaynebirthplace.museum)

Iowa Quilt Museum:  
[www.iowaquiltmuseum.org](http://www.iowaquiltmuseum.org)

Beans and Beignets:  
[www.madisoncounty.com](http://www.madisoncounty.com)

Wallace Farm:  
[www.wallace.org](http://www.wallace.org)

*itinerary & photos courtesy of  
Madison County Chamber of Commerce*



updated October 2023





# WALLACE CENTERS OF IOWA

THE WALLACE FARM  
2773 290th Street, Orient, IA 50858  
641-337-5019 • amyzellweger@wallace.org

## SAMPLE ITINERARY: one day in Greenfield, IA

Start the day at the **IOWA AVIATION MUSEUM & PILOTS HALL OF FAME**. This tribute to Iowa's fascinating aviation heritage is like 3 museums in one with more than a dozen antique aircraft, model displays, and military memorabilia.

With 2 outstanding car collections in town, car buffs will be overcome with delight. **FOSTER'S CAR COLLECTION** and **SCHILDBERG'S CAR COLLECTION** are both chock-full of antique and classic cars and the stories that go with them.

Close by is the **WARREN CULTURAL CENTER**. The tour of this 1896 opera house includes stories from the restoration project, living quarters of the original owners, a monthly art exhibit and shopping at **ED & EVA'S**, where all items are made in Iowa.

A guided tour around Greenfield's **HISTORIC DISTRICT** is sure to note its unusual **PUBLIC SQUARE** design, known as a Lancaster Square. Don't miss your chance to do some shopping!

**HAROLD'S HITCHING POST** is not to be missed! This display of custom horse hitches and wagons are sure to bring back memories of traveling under true horsepower.

Film fans won't want to miss the collection from the movie Cold Turkey at the **ADAIR COUNTY HERITAGE MUSEUM COMPLEX** and the outdoor displays of the Old Depot, Church and Schoolhouse.

At the nearby **WALLACE FARM**, self-guided tours of the birthplace farm of Henry A. Wallace are available any time. Take the sculpture walking path through the restored prairie and seasonal prairie art exhibit (June-early October), then shop for items from local artisans in the gift shop. On Fridays from June to September, the **WALLACE FARM** offers their award-winning Pizza on the Prairie nights (reservations required).



### RESOURCES:

Greenfield Chamber/Main Street:  
[www.greenfieldiowa.com](http://www.greenfieldiowa.com)

Iowa Aviation Museum:  
[www.flyingmuseum.com](http://www.flyingmuseum.com)

Foster's Car Collection:  
[www.greenfieldiowa.com](http://www.greenfieldiowa.com)

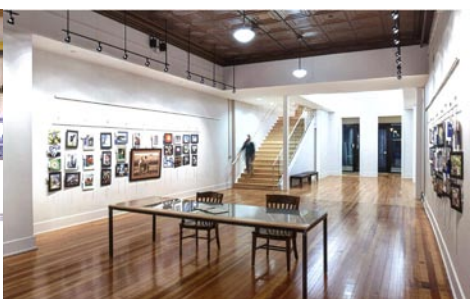
Schildberg's Car Collection:  
[www.greenfieldiowa.com](http://www.greenfieldiowa.com)

Warren Cultural Center:  
[www.warrenculturalcenter.com](http://www.warrenculturalcenter.com)

Harold's Hitching Post:  
[www.greenfieldiowa.com](http://www.greenfieldiowa.com)

Adair County Heritage Museum:  
[www.visitadaircounty.org](http://www.visitadaircounty.org)

Wallace Farm:  
[www.wallace.org](http://www.wallace.org)



updated October 2023